

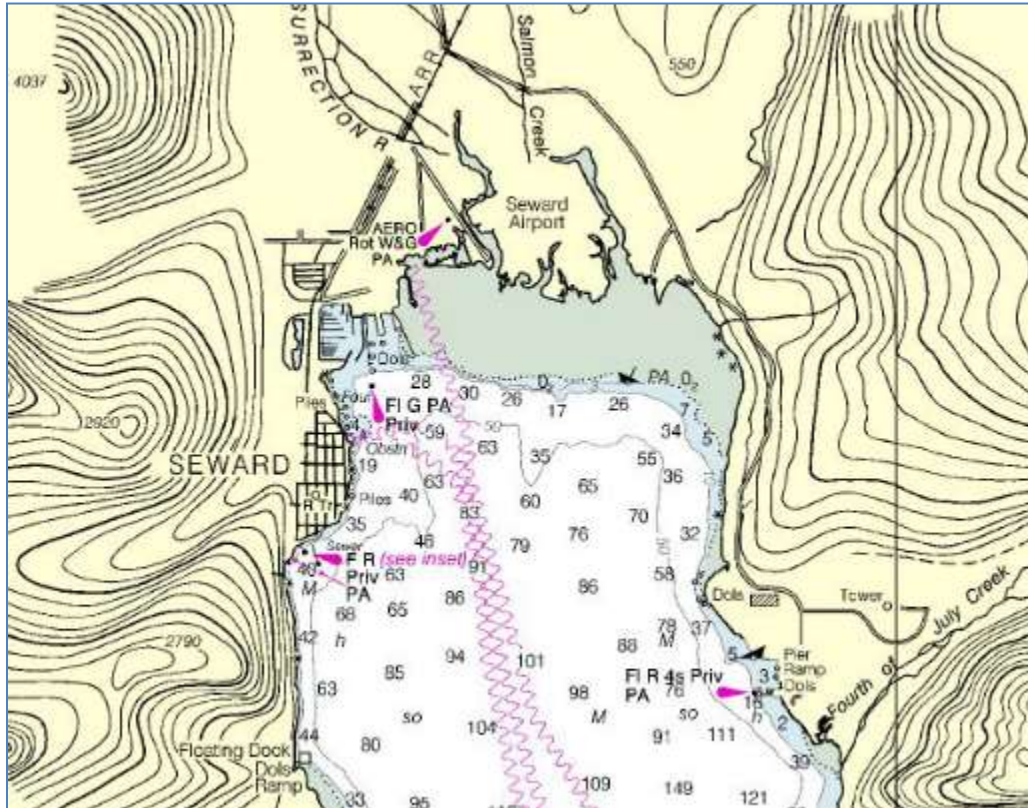


# CRUISE LINE AGENCIES OF ALASKA

913 Port Avenue, Seward, AK 99664 • Ph. 907-224-5350 • FX. 907-782-4153  
E-mail: swdops@claa.com

## Seward, AK – Alaska Railroad Cruise Dock

60° 07'N, 149° 26'W



### Community Profile:

Seward is situated on Resurrection Bay on the east coast of the Kenai Peninsula, 125 highway miles south of Anchorage. It lies at the foot of Mount Marathon and is the gateway to the Kenai Fjords National Park. Population within city limits is about 2,600 people, with another 2,600 people living just beyond our city boundaries. Founded in 1903 as the ocean terminus of what is now the Alaska Railroad, Seward is Alaska's only deep-water, ice-free port with rail and highway transportation to Alaska's interior and major urban population centers. This strategically positions Seward for cruise vessel operations and passenger services.

Seward is a progressive community that enjoys a beautiful and scenic natural Alaskan environment with numerous visitor attractions. The town offers day cruises, kayaking, fishing, abundant marine wildlife, and unparalleled recreation opportunities in the surrounding mountains. It also features the Alaska SeaLife Center, a marine research and wildlife rehabilitation facility with the state's only public aquarium.



# CRUISE LINE AGENCIES OF ALASKA

913 Port Avenue, Seward, AK 99664 • Ph. 907-224-5350 • FX. 907-782-4153  
E-mail: swdops@claa.com

## General Port Info:

As the gateway to Kenai Fjords National Park, Seward's waterfront annually draws thousands of residents and visitors to the shores of Resurrection Bay in the Gulf of Alaska. This strategic ice-free deep-water port (sea floor elevation is -42 feet) can accommodate a wide variety of passenger and cargo vessels.

A high percentage of Seward Port users make intermodal connections through the Alaska Railroad terminus on the waterfront. Annually, more than 200,000 people and all types of cargo enter or exit Seward via the railroad dock facilities. Docks are directly connected to the state's rail system, which carries freight, resources and passengers to key hubs in Whittier, Anchorage, Wasilla, Palmer, Denali, Fairbanks/North Pole and communities in between. Dock facilities and the railroad support freight routes around the state through connections to ports, rivers and roads in every region.

The dock and terminal are owned and operated by the Alaska Railroad Corporation.

## Facility Specifications/Limitations:

The Alaska Railroad Cruise dock is 736 feet long and 200 feet wide and has two berths. The top of the dock elevation is 24 feet at MLLW. The Sea Floor Elevation for the east and west side of the dock is -42 ft.

The east and west sides of the cruise dock both have 10 fenders spaced 60' apart starting at the south of the pier, except between the 4th and 5th fenders, where they are spaced 120 feet apart. Mooring bollards on the East and West side of the dock are spaced 60 feet apart along the entire length of the dock. Each side of the dock has five (5) yokohamas, placed to accommodate a variety of cruise ship sizes and docking positions.

The Dale Lindsey Seward Intermodal Terminal, located on the shore end of the pier, is 240 feet long and 100 feet wide. It offers intermodal connections for cruise and other maritime passengers, and has an adjacent rail link for the Cruise Train to Anchorage airport.

## Services Available:

**MDO** – Available by truck or dock pipeline.

**Fresh Water** – Available upon arrival. Both the east and the west sides of the cruise dock have metered water connections. The Alaska Railroad provides the connections and the meters. It is the ships responsibility to connect/disconnect the hoses and start/shut off the water flow. The water flow during the summer months is approximately 150 gallons per minute. Monthly water analyses are available from the Alaska Railroad via the Port Agent.



# CRUISE LINE AGENCIES OF ALASKA

913 Port Avenue, Seward, AK 99664 • Ph. 907-224-5350 • FX. 907-782-4153  
E-mail: swdops@claa.com

## Tugs:

Tug JUNIOR (twin screw 1,300hp) serves as the compulsory lines boat during docking for vessels that use offshore mooring dolphins. It can be used for assists if necessary, but has limited power.

In the event a more powerful assist is needed, one larger tug (CHAHUNTA – 3,000hp) is sometimes in port. 24-hour advance notice is requested, but may be available on short notice.

All tug services are arranged through the port agent. Current rates available upon request.

## Weather/Ice Conditions:

The approach to Seward and the entire port remain ice-free year-round. Prevailing winds are from the south from April to September, and north during the remainder of the year. The high mountain ranges give some protection, but the region can be subject to occasional williwaws. Seward experiences a maritime climate, with summer temperatures averaging from 49 to 63 °F. Annual precipitation averages 66 inches of rain and 80 inches of snowfall.

## Tidal Conditions:

The diurnal range of the tide is 10.5 feet. Tides typically have very little effect on cruise ship operations in Seward, as the stevedores can use a variety of gangway and platform configurations, and use cranes for loading operations. Water densities are typically average between 1.013 and 1.018.

## Charts:

16680, 16682, and 16683

## Pilot Station:

1.1 miles 152°T from Caines Head Light; approximate position 59°58' north latitude, 148°22' west longitude. State-licensed pilots are mandatory.

## Approach:

Seward is located at the head of Resurrection Bay. The transit time from pilot station to the loading berth is approximately 60 minutes. There are no port restrictions. The approach to the port and to the berth can be made day or night. The approach is in very deep water with no obstructions.

## Marine Pilot Organization:

Southwest Alaska Pilot's Association (SWAPA)

Photographs/Diagrams in following pages and attached documents



# CRUISE LINE AGENCIES OF ALASKA

913 Port Avenue, Seward, AK 99664 • Ph. 907-224-5350 • FX. 907-782-4153  
E-mail: [swdops@claa.com](mailto:swdops@claa.com)



The Alaska Railroad Seward Port Facility, with the cruise dock and terminal at center

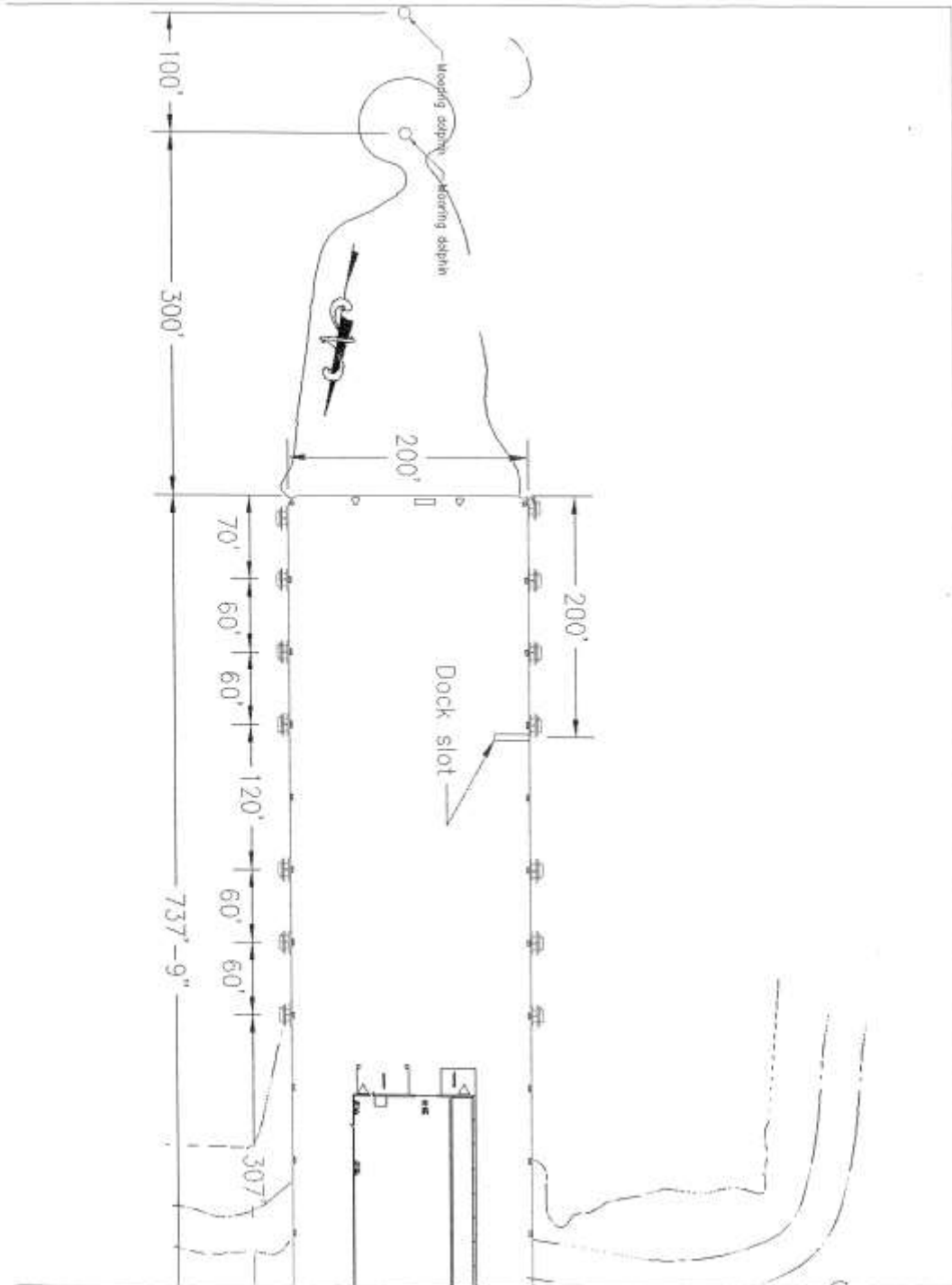


*Serving All Alaskan Ports*



# CRUISE LINE AGENCIES OF ALASKA

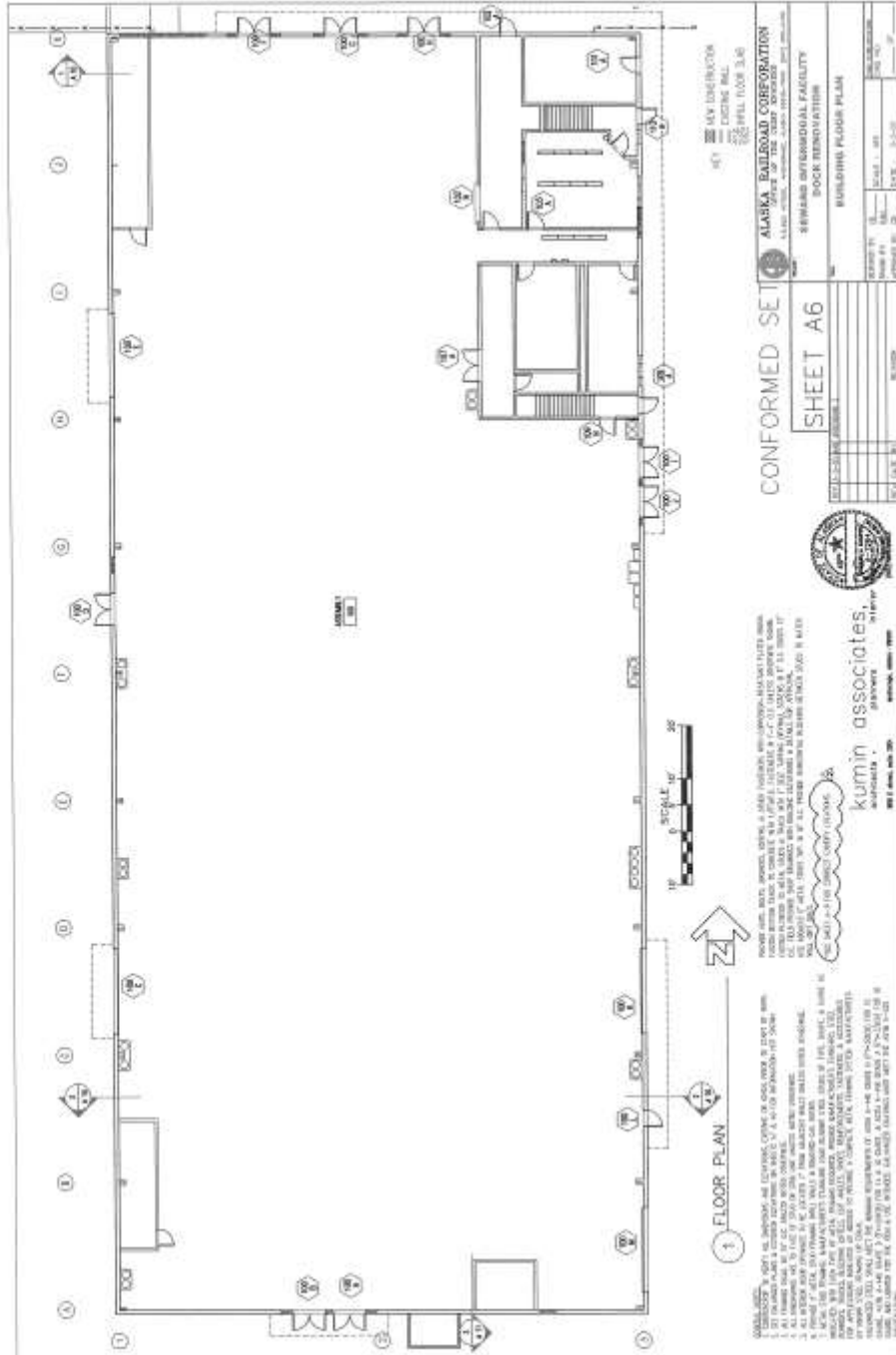
913 Port Avenue, Seward, AK 99664 • Ph. 907-224-5350 • FX. 907-782-4153  
E-mail: swdops@claa.com

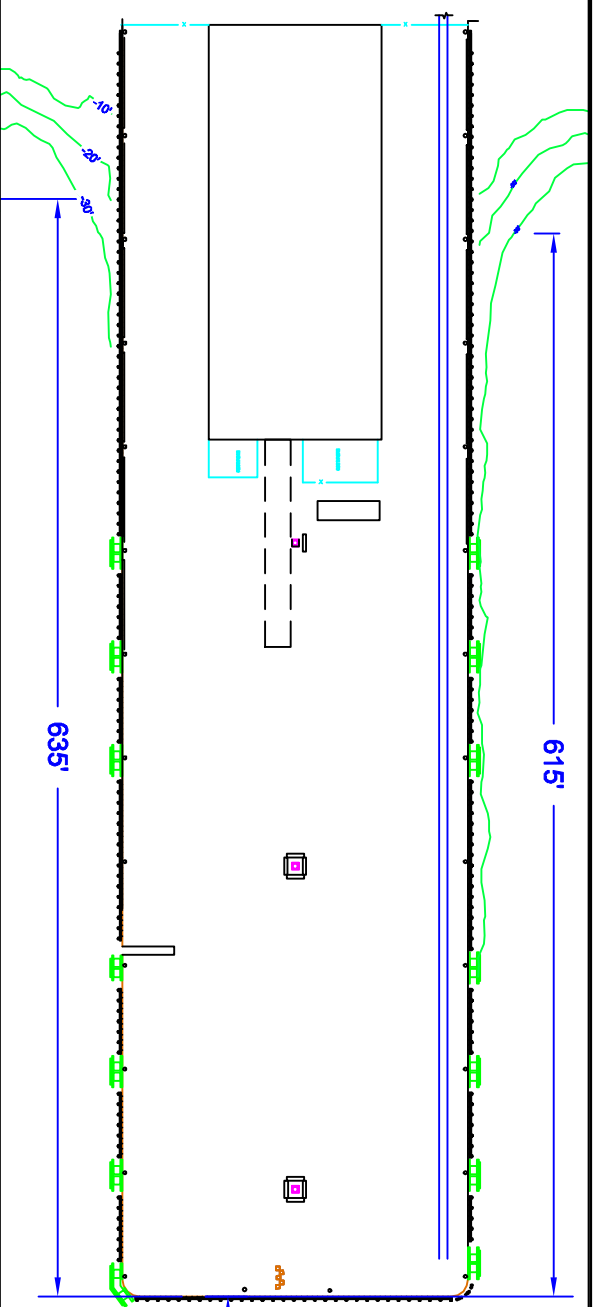




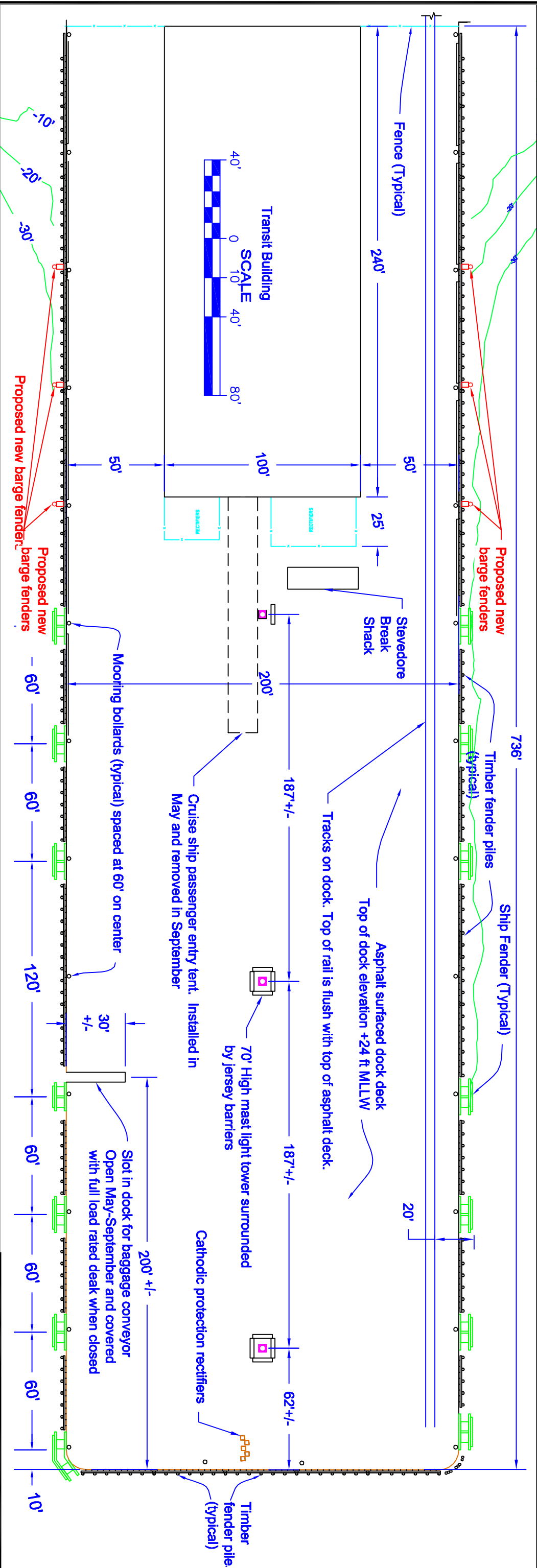
# CRUISE LINE AGENCIES OF ALASKA

913 Port Avenue, Seward, AK 99664 • Ph. 907-224-5350 • FX. 907-782-4153  
E-mail: swdops@claa.com





Mooring dolphins rated for 165 tons with mooring line angle not to exceed 30° from horizontal



Transit Building



- Notes:
- Potable water is available from East dock year round with approximately 150 gpm flow available May thru September and 25 GPM available all other months.
  - Dock load rating is 500 psf or
    - Cooper E50 on track at the dock face or
    - 25 ton wheel load for gantry crane on rails with four wheels per truck and wheels spaced at 2'-8", 3'-4" and 2'-8" and rails spaced 32' apart. Note gantry crane rails have been removed.
    - 17.5 ton wheel load for rubber tire forklift with dual 18"x25" tires inflated to 70 psi and a tread of 9'-0"
    - Truck load of H20-S16

**Seward Tides**

Maximum:	15.7 ft
MHHW:	10.6 ft
MHW:	9.7 ft
MLW:	1.4 ft
MLLW:	0.0 ft
Minimum:	-4.4 ft

**ALASKA RAILROAD CORPORATION**  
ENGINEERING SERVICES  
P.O. BOX 107500, ANCHORAGE, ALASKA 99510-7500

PROJECT : **Port Facilities Seward, Alaska**

TITLE : **West (Cruise Ship) Dock Plan**

DESIGNED BY:	DCO	SCALE :	AS NOTED	A/E NO.:	
DRAWN BY:		CHECKED BY:		DATE :	Jun 26, 2012
CHECKED BY:		DATE :			
APPROVED BY:					